

To: Authorized Distributors, OEMs, System Integrators, and Repair Facilities

From: Laser Consumables Team

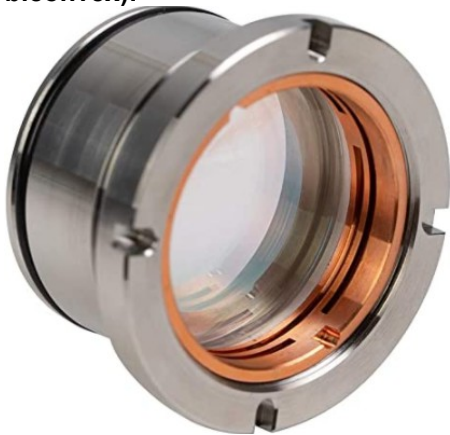
Introducing Raytools® Original series

The Hypertherm Laser Consumables team is pleased to announce the introduction of new Original Raytools® brand series suitable for many OEM systems (i.e. Bodor) with manual change using Raytools cutting head:

- **Raytools OEM original Protective windows/Cover glass – see full list below**



- **Raytools OEM Original Lens – see full list below (Lens and Lens assembly kit with support 1 meniscus + 1 biconvex):**



- **Raytools OEM cables – see full list below**



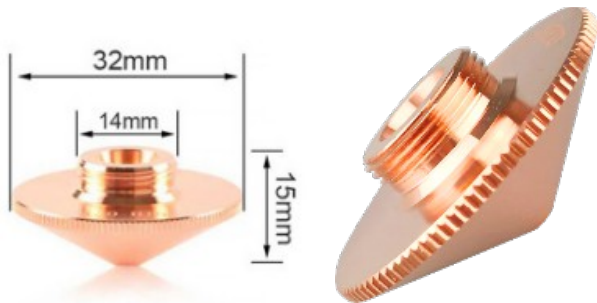
- **Raytools OEM lower head parts kit (TRA) capacity sensor head – see full list below**



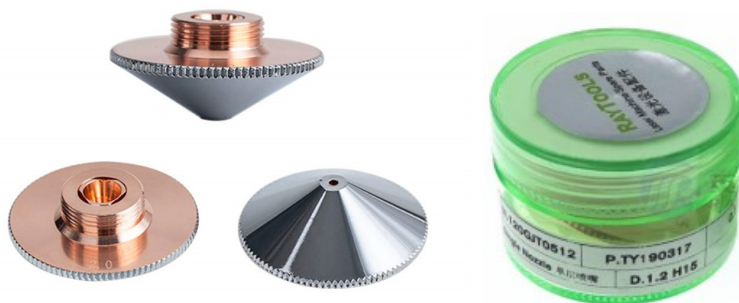
- **Other Maintainances Accessories (Tools for lens change and Seal rings for protective windows) – see full list below**



- **M14 Conical Single Nozzle (diam 1,0 – 5,0) – see full list below**



- **M14 Conical Double Nozzle Chrome Plated (diam 1,0 – 5,0) – see full list below**



- **M14 and M11 Nozzle Holder**



Below the list of our pn with Raytools references but without prices, Enclosed to this e-mail you will find this list complete of prices

PROTECTIVE WINDOWS:

| INT PN | RAYTOOLS PN | DESCRIPTION | Raytools Head Model |
|----------|--------------------------------|---|---|
| PW0022II | 211LCG0020 | RT Cover glass D24.9*1.5 QBH | USED ON RAYTOOLS HEADS BT240S/BM109/BM111 |
| PW0023II | 211LCG0037 | RT Cover glass 27.9mm DIA x 4.1mm 1064nm | USED ON RAYTOOLS HEADS BT210/BT210S/BT240/BT240S/BM109/BM11 1 |
| PW0024II | 211LCG0076 | RT Cover glass 38.1mm DIA x 1.6mm 1064nm 8kW | USED ON RAYTOOLS HEADS BM114/BM114S/BM115 |
| PW0027II | 110255IAG0004 - 31200000090 | RT Cover glass 37mm DIA x 7.0mm 1064nm 6kW | USED ON RAYTOOLS HEADS BM114/BM114S |
| PW0028II | 211LCG0078 | RT Cover glass 37mm DIA x 7.0mm 1064nm 12kW | USED ON RAYTOOLS HEADS BM115 |

SEAL RINGS:

| INT PN | RAYTOOLS PN | DESCRIPTION | Raytools Head Model |
|--------|---------------|-----------------------------|---|
| AL0051 | 11021M2110051 | RT Seal ring 29.2x21x3.55mm | USED ON RAYTOOLS HEADS BT240S/BM109/BM111 |
| AL0007 | 11021M2110007 | RT Seal ring 32.2x24x3.55mm | USED ON RAYTOOLS HEADS BT210/BT210S/BT240/BT240S/BM109/BM1 11 |
| AL0005 | 11021M2110005 | RT Seal ring 42.5x4x3.2mm | USED ON RAYTOOLS HEADS BM114/BM114S/BM115 |

CABLES:

| INT PN | RAYTOOLS PN | DESCRIPTION | Raytools Head Model |
|--------|-------------|---|---|
| AL9012 | 211TTW9012 | RT Tip transformer wire SMB– SMA 15cmz/z | USED ON RAYTOOLS HEADS BT240/BT240S/BM109/BM111/BM114/BM114S/BM11 5 |
| AL9002 | 211TTW9002 | RT Tip transformer wire SMB– SMA 15cmz/z | USED ON RAYTOOLS HEADS BT210/BT210S |

Hypertherm and Centricut are not affiliated with the named manufacturers. Reference to machines, parts, descriptions, and model numbers are for convenience in verifying compatibility only. All parts are made by or for Centricut and are not made by the referenced manufacturers (unless expressly indicated). Hypertherm and Centricut are registered trademarks of Hypertherm, Inc. All other trademarks are the properties of their respective owners.

TOOLS FOR LENS CHANGE:

| INT PN | RAYTOOLS PN | DESCRIPTION | Raytools Head Model |
|--------|-------------|--------------------------------|-------------------------------|
| AL600A | 120A60007A | RT Tool for lens change BT240S | USED ON RAYTOOLS HEADS BT240S |
| ALH00A | 120AH0006A | RT Tool for lens change BM109 | USED ON RAYTOOLS HEADS BM109 |
| ALG05A | 120AG0524A | RT Tool for lens change BM111 | USED ON RAYTOOLS HEADS BM111 |
| AL300B | 120A30002B | RT Tool for lens change BM114S | USED ON RAYTOOLS HEADS BM114S |
| ALU01A | 120AU2901A | RT Tool for lens change BM115 | USED ON RAYTOOLS HEADS BM115 |

LENS:

| INT PN | RT PN | DESCRIPTION | RT Head Model |
|--------|-------------------|--|--|
| AL0019 | 110255AACBHD0019 | RT Collimation lens Meniscus, D28-BFL100mm Fused Silica, 1064 | USED ON RT HEADS BT210S/BM109 |
| AL0020 | 110255AAFBD0020 | RT Collimation lens Biconvex, D28-BFL100mm Fused Silica, 1064 | |
| AL0021 | 110255AACBHD0021 | RT Focus lens Meniscus, Fused Silica-27.94mm-BFL125mm-1064nm | |
| AL0022 | 110255AAFBD0022 | RT Focus lens Biconvex, Fused Silica-27.94mm-BFL125mm-1064nm | |
| AL0025 | 110255AAFBD0025 | RT Focus lens assembly D38.1 FL200mm | |
| AL0026 | 110255AACBHD0026 | RT Focus lens Meniscus, D28-BFL150mm Fused Silica, 1064 | |
| AL0096 | 110255AAEBHE0096 | RT Collimation lens Meniscus, D30-F100 Fused Silica 1064nm, 2kW -P | USED ON RT HEADS BT240/BT240S 2KW |
| AL0095 | 110255AACBHE0095 | RT Collimation lens Biconvex, D30-F100 Fused Silica 1064nm, 2kW -P | |
| AL0097 | 110255AACBHE0097 | RT Focus lens Biconvex, D30-F125 Fused Silica 1064nm, 2kW -P | |
| AL0098 | 110255AAEBHE0098 | RT Focus lens Meniscus, D30-F125 Fused Silica 1064nm, 2kW -P | |
| AL0089 | 110255AAFBDHE0089 | RT Collimation lens Meniscus, D30-F100 Fused Silica 1064nm | USED ON RT HEADS BT240S 3.3KW/BM111 |
| AL0090 | 110255AACBHE0090 | RT Collimation lens Biconvex, D30-F100 Fused Silica 1064nm | |
| AL0092 | 110255AACBHE0092 | RT Focus lens Biconvex, D30-F125 Fused Silica 1064nm | |
| AL0091 | 110255AAFBDHE0091 | RT Focus lens Meniscus, D30-F125 Fused Silica 1064nm | |
| AL0093 | 110255AACBHE0093 | RT Focus lens Biconvex, D30-155mm | |
| AL0094 | 110255AAEBHE0094 | RT Focus lens Meniscus, D30-155mm | |
| AL0126 | 110255AACBHE0126 | RT Focus lens Biconvex, D30-190.5mm | |
| AL0127 | 110255AAFBDHE0127 | RT Focus lens Meniscus, D30-190.5mm | |

LENS:

| INT PN | RT PN | DESCRIPTION | RT Head Model |
|--------|--------------------------------|---|---|
| AL0181 | 110255AAFBHP0181 - 3250010343 | RT Collimation lens Meniscus, D37-EFL100 Fused Silica 1064nm | USED ON RAYTOOLS HEADS BM114/BM114S (BMH114S01A/B, BMH114S02A/B) |
| AL0180 | 110255AACBHP0180 - 3250010346 | RT Collimation lens Biconvex, D37-EFL100 Fused Silica 1064nm | |
| AL0182 | 110255AACBHP0182 - 3250010347 | RT Focus lens Biconvex, D37-EFL150 Fused Silica 1064nm | |
| AL0183 | 110255AAFBHP0183 - 3250010344 | RT Focus lens Meniscus, D37-EFL150 Fused Silica 1064nm | |
| AL0082 | 110255AACBDG0082 - 3250010348 | RT Focus lens Biconvex, D38.1-BFL200 Fused Silica 1064nm | |
| AL0083 | 110255AAFBBDG0083 - 3250010345 | RT Focus lens Meniscus, D38.1-BFL200 Fused Silica 1064nm | |
| AL0323 | 3250010323 | RT Collimation Lens Meniscus, D37-F100mm, Fused Silica 1064nm | USED ON RAYTOOLS NEW MODEL OF HEADS BM114S (BMH114S22A, BMH114S23A) |
| AL0322 | 3250010322 | RT Collimation Lens Biconvex, D37-F100mm, Fused Silica 1064nm | |
| AL0324 | 3250010324 | RT Focus lens Biconvex, D37-F150mm, Fused Silica 1064nm | |
| AL0325 | 3250010325 | RT Focus lens Meniscus, D37-F150mm, Fused Silica 1064nm | |
| AL0326 | 3250010326 | RT Focus lens Biconvex, D37-F200mm, Fused Silica 1064nm | |
| AL0327 | 3250010327 | RT Focus lens Meniscus, D37-F200mm, Fused Silica 1064nm | |

LENS ASSEMBLY (KIT WITH SUPPORT + 1 MENISCUS + 1 BICONVEX):

| INT PN | RT PN | DESCRIPTION | RT Head Model |
|--------|------------|--|------------------------------------|
| AL621A | 120A60021A | RT Collimation lens assembly D30 FL100mm | USED ON RT HEADS BT240S 2KW |
| AL623A | 120A60023A | RT Focus lens assembly D30 FL125mm | |
| ALH06A | 120AH0600A | RT Collimation lens assembly D28 FL100mm | USED ON RT HEADS BM109 |
| ALH07A | 120AH0700A | RT Focus lens assembly D28 FL125mm | |
| ALG06A | 120AG0600A | RT Collimation lens assembly D30 FL100mm | USED ON RT HEADS BM111/BT240S 3KW |
| ALG07A | 120AG0700A | RT Focus lens assembly D30 FL125mm | |
| ALG08A | 120AG0800A | RT Focus lens assembly D30 FL155mm | |
| AL327A | 120A32700A | RT Collimation lens assembly D37 FL100mm | USED ON RT HEADS 8 kw BM114/BM114S |
| AL307A | 120A30700A | RT Focus lens assembly D37 FL150mm | |
| AL308A | 120A30800A | RT Focus lens assembly D38.1 FL200mm | |
| ALH01A | 120BH1001A | RT Collim. lens assembly D37F100mm | USED ON 6 kw RT HEADS BM114S |
| ALH02A | 120BH1002A | RT Focus lens assembly D37 F150mm | |
| ALH03A | 120BH1003A | RT Focus lens assembly D37 F200mm | |

CAPACITY SENSOR HEADS:

| INT PN | RAYTOOLS PN | DESCRIPTION | Raytools Head Model |
|--------|-------------|---|-------------------------------|
| AL610A | 120A61000A | RT TRA CAPACITY HEAD SENSOR FOR BT240S HEAD | USED ON RAYTOOLS HEADS BT240S |
| ALH13A | 120AH1300A | RT TRA CAPACITY HEAD SENSOR FOR BM109 HEAD | USED ON RAYTOOLS HEADS BM109 |
| ALG17A | 120AG1700A | RT TRA CAPACITY HEAD SENSOR FOR BM111 HEAD | USED ON RAYTOOLS HEADS BM111 |
| AL320A | 120A32000A | RT TRA CAPACITY HEAD SENSOR FOR BM114S HEAD | USED ON RAYTOOLS HEADS BM114S |

M14 NOZZLES AND NOZZLE HOLDER:

| INT PN | RAYTOOLS PN | DESCRIPTION | Raytools Head Model |
|--------|-------------|---|---|
| AL581 | 120274100B | RT M14 NOZZLE HOLDER | USED ON RAYTOOLS HEADS BT240/BT240S/BM109/ BM111/BM114/BM114 S |
| L0510 | 120GJT0510 | RT M14 CONICAL SINGLE NOZZLE D. 1,0mm | |
| L0512 | 120GJT0512 | RT M14 CONICAL SINGLE NOZZLE D. 1,2mm | |
| L0515 | 120GJT0515 | RT M14 CONICAL SINGLE NOZZLE D. 1,5mm | |
| L0520 | 120GJT0520 | RT M14 CONICAL SINGLE NOZZLE D. 2,0mm | |
| L0525 | 120GJT0525 | RT M14 CONICAL SINGLE NOZZLE D. 2,5mm | |
| L0530 | 120GJT0530 | RT M14 CONICAL SINGLE NOZZLE D. 3,0mm | |
| L0535 | 120GJT0535 | RT M14 CONICAL SINGLE NOZZLE D. 3,5mm | |
| L0540 | 120GJT0540 | RTM14 CONICAL SINGLE NOZZLE D. 4,0mm | |
| L0545 | 120GJT0545 | RT M14 CONICAL SINGLE NOZZLE D. 4,5mm | |
| L0550 | 120GJT0550 | RT M14 CONICAL SINGLE NOZZLE D. 5,0mm | |
| L0610 | 120GJT0610 | RT M14 CONICAL DOUBLE NOZZLE D. 1,0mm CHROME PLATED | |
| L0612 | 120GJT0612 | RT M14 CONICAL DOUBLE NOZZLE D. 1,2mm CHROME PLATED | |
| L0615 | 120GJT0615 | RT M14 CONICAL DOUBLE NOZZLE D. 1,5mm CHROME PLATED | |
| L0620 | 120GJT0620 | RT M14 CONICAL DOUBLE NOZZLE D. 2,0mm CHROME PLATED | |
| L0625 | 120GJT0625 | RT M14 CONICAL DOUBLE NOZZLE D. 2,5mm CHROME PLATED | |
| L0630 | 120GJT0630 | RT M14 CONICAL DOUBLE NOZZLE D. 3,0mm CHROME PLATED | |
| L0635 | 120GJT0635 | RT M14 CONICAL DOUBLE NOZZLE D. 3,5mm CHROME PLATED | |
| L0640 | 120GJT0640 | RT M14 CONICAL DOUBLE NOZZLE D. 4,0mm CHROME PLATED | |
| L0645 | 120GJT0645 | RT M14 CONICAL DOUBLE NOZZLE D. 4,5mm CHROME PLATED | |
| L0650 | 120GJT0650 | RT M14 CONICAL DOUBLE NOZZLE D. 5,0mm CHROME PLATED | |

M11 NOZZLE HOLDER FOR BM115 (TO BE USED WITH M11 PRECITEC NOZZLES):

| INT PN | RAYTOOLS PN | DESCRIPTION | Raytools Head Model |
|--------|----------------------------|----------------------|-----------------------------|
| AL199A | 120515099A - A0-NOZ-D00051 | RT M11 NOZZLE HOLDER | USED ON RAYTOOLS HEAD BM115 |